

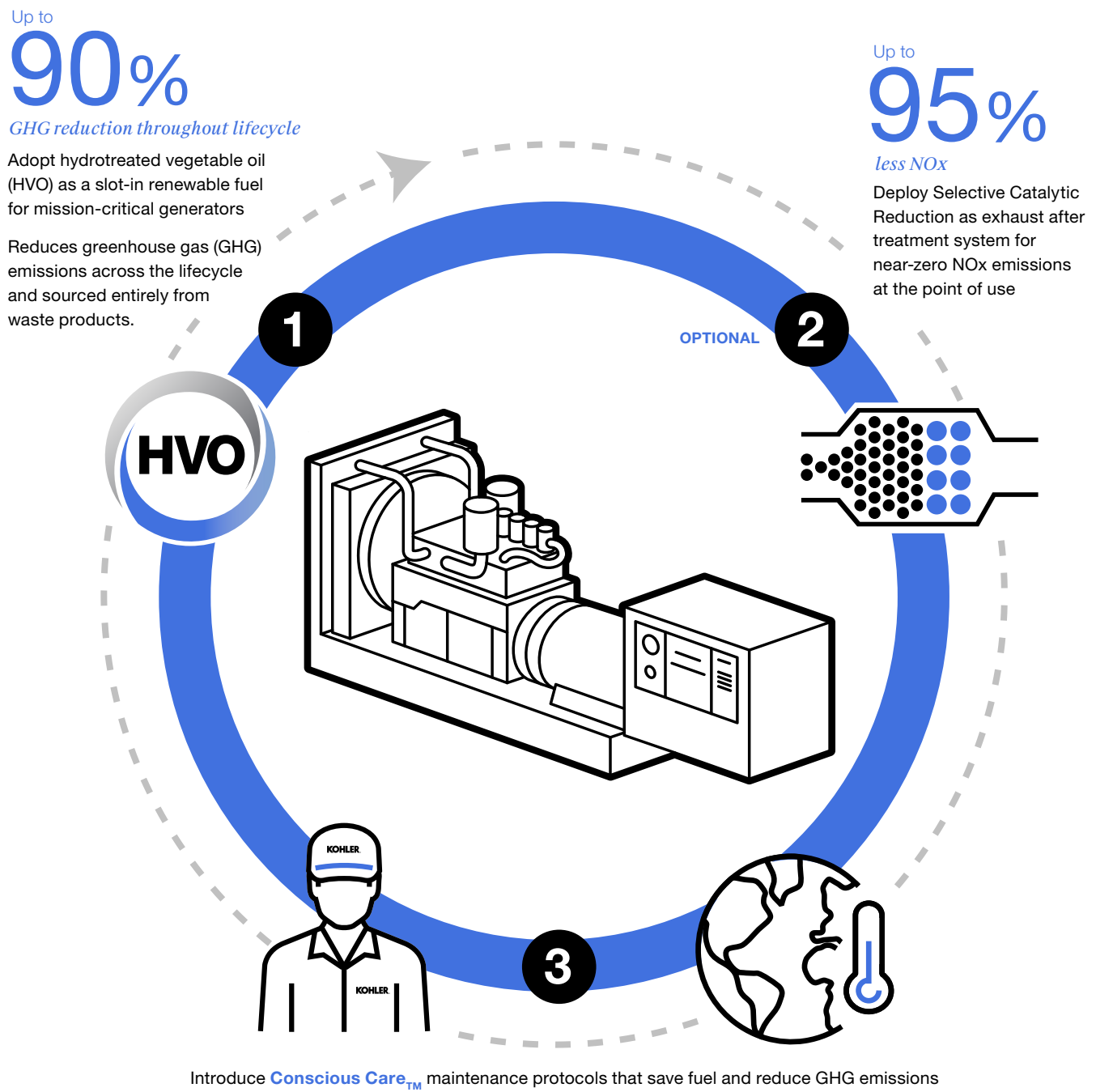


| Conscious Care™

More *sustainable energy* on the route to net zero by 2050

Reduce your environmental impact with an ecosystem of advanced technologies.

Generators play a crucial role as backup to mission-critical power systems in hospitals, data centers, utility plants, and elsewhere. However, the fight against climate change means they must become more sustainable as the transition to Net Zero progresses. Kohler has developed a suite of systems and technologies – from renewable fuels to advanced maintenance techniques – that reduce emissions at every stage of the lifecycle.



Conscious Care™ options include:

No-load Exercise enables a generator's regular monthly exercise to be run without load.

On-site savings

40%

Reduces generator exhaust emissions by **40% per year** compared to loaded cycles, while delivering a **44% reduction** in fuel consumption

Throughout lifecycle

70%

Lowers total GHG emissions, including fuel production and distribution, by **70%**

Four-month Extended Exercise with test every four months with no load, before a yearly full test.

On-site savings

69%

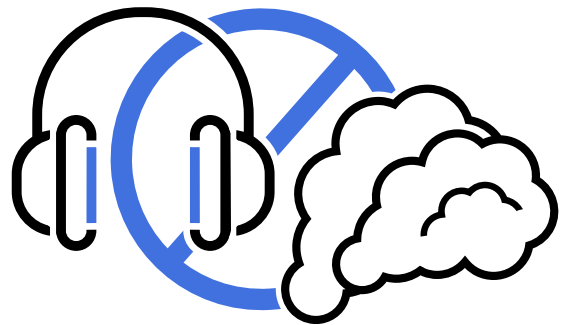
Reduces generator exhaust emissions by **69%** and fuel consumption by **71%**

Throughout lifecycle

79%

Lowers total GHG emissions, including fuel production and distribution, by **79%**

The Conscious Care maintenance program also reduces noise and eliminates visible black smoke at cold start.



| Conscious Care™

This suite of emissions-reducing systems and technologies can deliver *sustainable and resilient* mission-critical power on the route to Net Zero.

[Click here](#) to find out how more sustainable energy can support your operations.